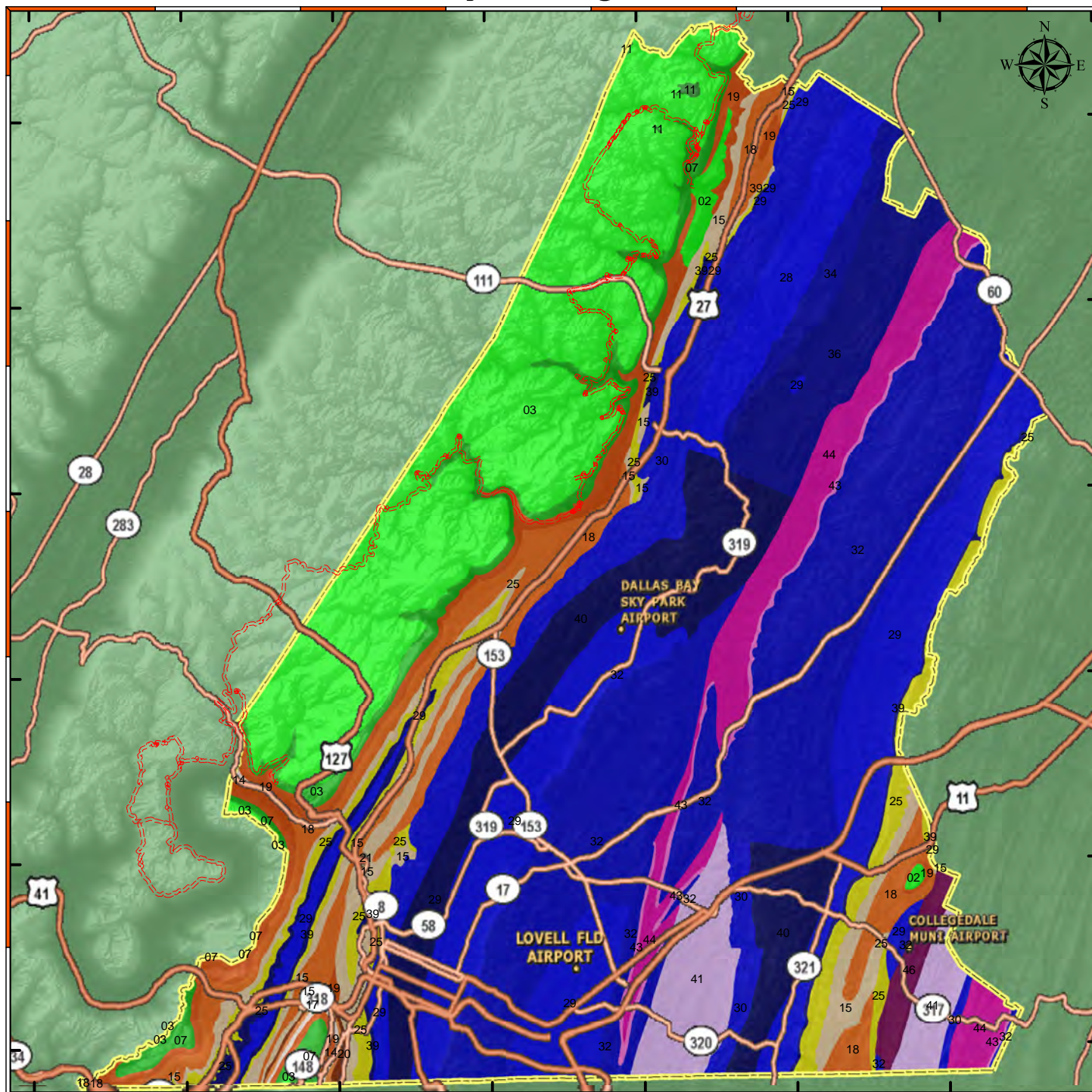
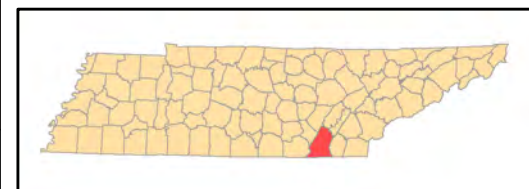


Hamilton County Geological Formation



Hamilton County is at the southwest corner of East Tennessee, bounded on the south by the Georgia State line. About one-fifth of the county is part of the Cumberland Plateau and its escarpment. Conglomerates, sandstones, siltstones, and shales, with a few thin coal seams underlie the plateau. These relatively level rocks are of Pennsylvanian age. The escarpment is lined with limestones, sandstones, and shales of Mississippian age. The rest of Hamilton County is in the Valley and Ridge, underlain by limestones, dolomites, shales, and sandstones. Rocks in this area are mostly faulted and folded and range from Cambrian to Mississippian in age. The Cumberland Plateau in Hamilton County is a linear upland about five miles wide along the western side of the county that includes parts of Walden Ridge, Raccoon, and Lookout mountains. Walden Ridge, the regional name given to the plateau in Tennessee east of Sequatchie Valley, forms the most southeastern part of the contiguous mass of the plateau in Tennessee. The average elevation of this tableland is about 1,800 feet, gradually rising westward to more than 2,000 feet along the Hamilton-Sequatchie County line.

"Tennessee Topology"
by David D. Starnes
TN Div of Geology, Bulletin 96



Hamilton County Geology Formation Breakdown		Stratigraphic Period	
—	Cumberland Trail		
01	Alluvial Deposits	23	Brasfield Formation
02	Crab Orchard Mountains & Gizzard Groups	24	Clinch Sandstone
03	Crab Orchard Mountains Group	25	Rockwood Formation
04	Crooked Fork Group	26	Bigby-Cannon Limestone
05	Cross Mountain Formation	27	Carters Limestone
06	Fentress Formation	28	Chepultepec Dolomite
07	Gizzard Group	29	Chickamauga Group
08	Groves Gap Formation	30	Copper Ridge Dolomite
09	Indian Bluff Formation	31	Junietta Formation
10	Redoak Mountain Formation	32	Knox Group
11	Rockcastle Conglomerate	33	Lebanon Limestone
12	Statostone Formation	34	Longview Dolomite
13	Vowell Mountain Formation	35	Middle and Lower Parts of Chickamauga Group
14	Bangor Limestone	36	Newala Formation, Mascot Dolomite
15	Fort Payne Formation	37	Pierce and Mufreesboro Limestones
16	Grainger Formation	38	Ridley Limestone
17	Monteagle Limestone	39	Sequatchie Formation
18	Newman Limestone	40	Welch Creek Formation
19	Pennington Formation	41	Conasauga Group
20	St. Louis Limestone	42	Maryville Limestone
21	Chattanooga Shale	43	Maynardville Limestone
22	Sneedville Limestone	44	Nolichucky Shale
		45	Pumpkin Valley Shale
		46	Rome Foundation