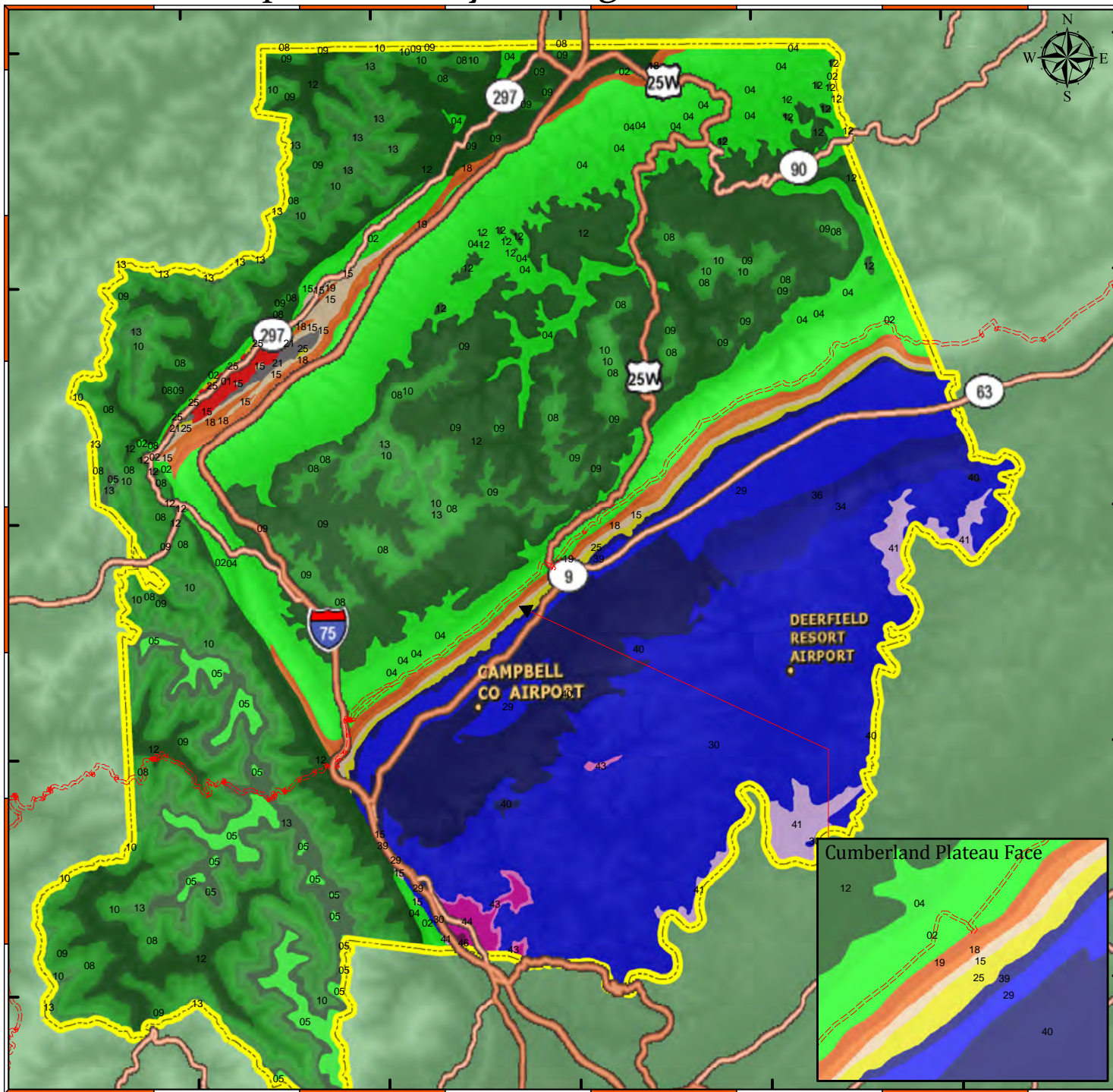
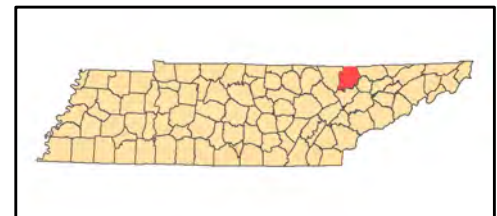


# Campbell County Geological Formation



Campbell County is in northwestern East Tennessee, bounded on the north by the Kentucky State line. About two-thirds of the county is part of the Cumberland Plateau. Underlying rock strata consist of Pennsylvanian-age conglomerates, sandstones, siltstones, and shales, with numerous coal seams of minable thickness and quality. Most of these rocks are nearly level, but some are highly folded and faulted. The remaining third of the county is in the Valley and Ridge. There, nearly horizontal beds of dolomite, limestone, sandstone, and shale underlie the province. Most of these rocks are Ordovician age, although Cambrian, Silurian, Devonian, and Mississippian units also occur in the province. In the county's southwestern corner, Cross Mountain reaches an elevation of 3,534 feet. It is the highest point between the Great Smoky Mountains and the Black Hills of South Dakota.

"Tennessee Topology"  
by David D. Starnes  
TN Div of Geology, Bulletin 86



Cumberland Trail		Campbell County Geology Formation Breakdown	
—	Cumberland Trail	01	Alluvial Deposits
—	Campbell County Geology Formation Breakdown	02	Crab Orchard Mountains & Gizzard Groups
—		03	Crab Orchard Mountains Group
—		04	Crooked Fork Group
—		05	Cross Mountain Formation
—		06	Fentress Formation
—		07	Gizzard Group
—		08	Graves Gap Formation
—		09	Indian Bluff Formation
—		10	Redoubt Mountain Formation
—		11	Rockcastle Conglomerate
—		12	Slates Formation
—		13	Vowell Mountain Formation
—		14	Bangor Limestone
—		15	Fort Payne Formation
—		16	Granger Formation
—		17	Monteagle Limestone
—		18	Newman Limestone
—		19	Perkins Formation
—		20	St. Louis Limestone
—		21	Chatanooga Shale
—		22	Sneedville Limestone
—		23	Brassfield Formation
—		24	Clinch Sandstone
—		25	Rockwood Formation
—		26	Bigby-Cannon Limestone
—		27	Carters Limestone
—		28	Chepultepec Dolomite
—		29	Chickamauga Group
—		30	Copper Ridge Dolomite
—		31	Juniota Formation
—		32	Knox Group
—		33	Lebanon Limestone
—		34	Longview Dolomite
—		35	Middle and Lower Parts of Chickamauga Group
—		36	Newala Formation, Mascat Dolomite
—		37	Pierce and Mufreesboro Limestones
—		38	Ridley Limestone
—		39	Sequatchie Formation
—		40	Wells Creek Formation
—		41	Conasauga Group
—		42	Maryville Limestone
—		43	Maynardville Limestone
—		44	Nolichucky Shale
—		45	Pumpkin Valley Shale
—		46	Rome Foundation